



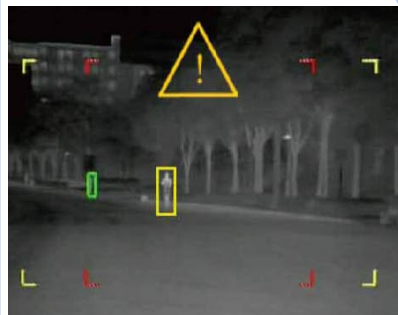
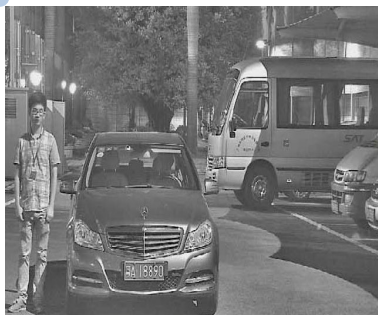
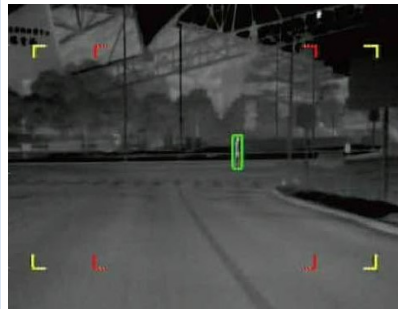
SATIR NV618S

Dual Field Automotive Night Vision Camera

The NV618S has been designed to work in both daylight and night time environment due to the improved low light and thermal camera technology. It has primarily been designed for the automotive market but has other application in the security and military markets.

The NV618S is a safety device as it has built-in analytics to alert the driver on ongoing obstructions and pedestrians, the alerts are either visual or audible depending on the user configuration and can work in most weather conditions such as poor light , fog etc.

The NV618S can be easily mounted onto the vehicle and with its robust casing it can withstand harsh environments.



Features

- Wide Field of View gives the driver greater visibility
- Single or 4 screen Video Output
- Low level light system
- Dual Channel Design
- Versatile Car Camera adaptable to all environments & Vehicles
- Ability to see through fog, mist and rain
- Intelligent identification of pedestrians and cyclists

Marley's Business Park, Marley's Lane, Drogheda, Co. Louth, Ireland

Tel: + 353 (41) 9846786

Email: enquiry@satir.com

Website: www.satir.com

Camera Name	NV618S
Specification—Thermal Camera	
Resolution	384x288
Detector Type	Amorphous silicon uncooled focal plane array
Focal Length	13mm
Field of View	28°x21 (Tolerance: ±5%) Customers can customise other lenses
Image Display	White hot/black hot
Observation Distance	200m (1.7) 400m (for vehicle)
Specifications— Low Level Night Vision	
Image Sensor	HS761
Sense Resolution	1080x720
Illumination	0.01 Lux (Black/White)
Focal Length	20mm
Field of View	19°x11°
Observation Distance	100m (1.7m)
Environmental	
Operating Temperature	-20°C ~ 65°C
Storage	-40°C ~ 85°C
Encapsulation	IP67
Physical Characteristics (Camera Body)	
Weight	550g
Dimensions	123.5x57.5x77mm
Interfaces	
Power Input	DC12 V/2A
Video Output	PAL (customers can customise NTSC) Two-Way Video Output: CVBS Video Output
RS232	Optional (WIFI)

Please be aware specifications can vary from time to time

Marley's Business Park, Marley's Lane, Drogheda, Co. Louth, Ireland

Tel: + 353 (41) 9846786

Email: enquiry@satir.com