



SATIR D600

High Performance IR Camera with Laser Pointer

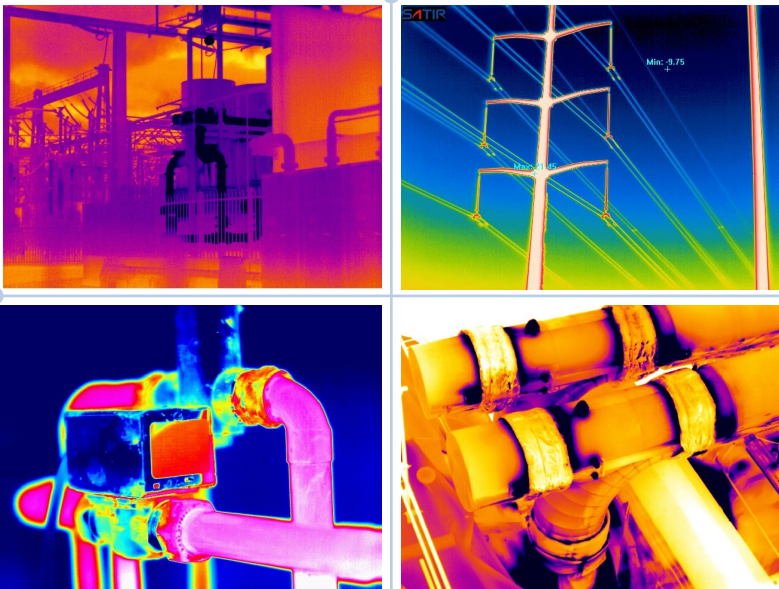
SATIR D600 is our newest addition to the D Series, it is a High Performance Handheld IR Camera which delivers high quality Images and Thermal Videos with it's 640x480 IR Detector.

The D600 has a range of imaging modes which includes Duo-Vision Plus which is SATIR latest innovative imaging technology. Duo Vision merges a infrared and visual image to deliver a highly detailed image to the user for analysis when carrying out a thermal survey.

The D600 comes with a touch screen that will auto focus to ensure the user has a clearly focused thermal image. This means when generating a report the image is already focused which enables accurate evaluation.

Features

- Newly Designed Platform
- IR/CCD/Duo Vision Plus
- Laser Pointer
- Built-in Memory
- Adaptable LCD Display
- Easy to use interface
- 5 MP High Definition Camera
- Thermal Video Recording



Marley's Lane, Drogheda, Co. Louth, Ireland

Tel: + 353 (41) 9846786

Email: enquiry@satir.com

Website: www.satir.com

| Camera Name | D600 |
|---------------------------------|---|
| D600 Specification | |
| Detector Resolution | 640x480 |
| Thermal Sensitivity (N.E.T.D) | ≤0.05°C@30°C |
| FOV/Min. Focus Distance | 24°x18°/0.20m |
| Spectral Range | 8-14um |
| Spatial Resolution | 0.65 mrad |
| Focus Mechanism | Manual/Motorised/Auto |
| Measurement | |
| Temperature Range | -20°C ~ + 600°C, up to +1500°C (Optional) |
| Accuracy | ±2°C or ± 2% of readings |
| Measurement Mode | 8 Movable Spots, Auto Hot/Cold Spot,profile, 2 area boxes, isotherm, line |
| Alarm | Yes |
| Image Presentation | |
| Image Mode | IR/CCD/Duo-Vision/Duo Vision Plus |
| Visible Pixels | High Definition CCD, 5 million pixels |
| LCD Display | 3.5" Capacitive Touch Screen |
| Image Output Mode | NTSC (60Hz) or PAL (50Hz) Composite Video |
| File Format (Thermal/Visual) | JPEG (Thermal/Visual) |
| Power System | |
| Battery Type | Built-in Rechargeable Lithium-ion Battery |
| Charge Interface | Type-C |
| Power Manage | Auto Shut Off/Sleep Mode |
| Environmental | |
| Encapsulation | IP54 |
| Physical Characteristics | |
| Tripod Mounting | 1/4" _20 |

Please be aware specifications can vary from time to time

Marley's Lane, Drogheda, Co. Louth, Ireland

Tel: + 353 (41) 9846786

Email: enquiry@satir.com

Website: www.satir.com